

## Trading Strategy

## Validation Report\*

Strategy Name: Guardian Adaptive PRO GBPUSD

Currency Pair: GBPUSD

Testing Period: 01-01-2023 to 17-04-2026

Starting Test Balance: \$10,000



## Overview

This strategy trades the GBPUSD using analysis from the M5, M15 and H1 timeframes. Below are the results of our extensive backtesting and analysis. Each strategy is subject to rigorous tests involving over 100 hours of computer-based evaluation to ensure its robustness and viability.

<b>TOTAL PROFIT</b>	<b># OF TRADES</b>	<b>SHARPE RATIO</b>	<b>PROFIT FACTOR</b>	<b>RETURN / DD RATIO</b>	<b>WINNING PERCENTAGE</b>
<b>\$ 40618.24</b>	<b>401</b>	<b>2.52</b>	<b>1.96</b>	<b>13.69</b>	<b>78.5 %</b>
<b>PROFIT IN PIPS</b> 3770.2 Ticks	<b>DRAWDOWN</b>	<b>% DRAWDOWN</b>	<b>DAILY AVG PROFIT</b>	<b>MONTHLY AVG PROFIT</b>	<b>AVERAGE TRADE</b>
<b>YEARLY AVG PROFIT</b> \$ 13539.33	<b>\$ 2966.6</b>	<b>16.57 %</b>	<b>\$ 33.79</b>	<b>\$ 1041.49</b>	<b>\$ 101.29</b>
<b>YEARLY AVG % RETURN</b> 135.39 %	<b>ANNUAL % / MAX DD %</b>	<b>R EXPECTANCY</b>	<b>R EXPECTANCY SCORE</b>	<b>STR QUALITY NUMBER</b>	<b>SQN SCORE</b>
<b>CAGR</b> 71.7 %	<b>4.33</b>	<b>0.21</b>	<b>25.36</b>	<b>2.29</b>	<b>2.33</b>

## STATS

## Strategy

Wins / Losses Ratio	3.65	Payout Ratio (Avg Win/Loss)	0.54	Average # of Bars in Trade	163.34
AHPR	101.55	Z-Score	-0.09	Z-Probability	53.59 %
Expectancy	101.29	Deviation	\$ 441.45	Exposure	8.15 %
Stagnation in Days	124	Stagnation in %	10.36 %		

## Trades

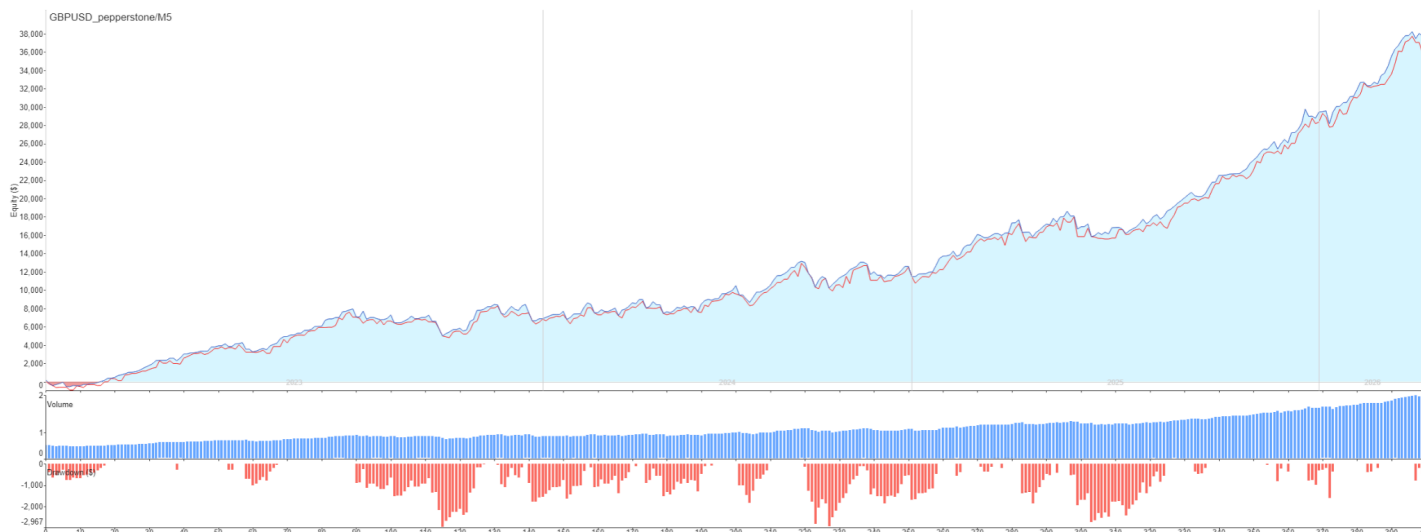
		# of Wins	314	# of Losses	86	# of Cancelled/Expired	0
Gross Profit	\$ 82996.22	Gross Loss	\$ 42377.98	Average Win	\$ 264.32	Average Loss	\$ 492.77
Largest Win	\$ 2842.86	Largest Loss	\$ -1426.61	Max Consec Wins	28	Max Consec Losses	4
Avg Consec Wins	4.55	Avg Consec Loss	1.28	Avg # of Bars in Wins	145.65	Avg # of Bars in Losses	229.36

## MONTHLY PERFORMANCE (\$)

Year	Jan	Feb	Mar	Apr	May	Jun	Jul	Aug	Sep	Oct	Nov	Dec	YTD
2026	1287.97	2249.67	5028.06	3283.39	0	0	0	0	0	0	0	0	11849.09
2025	1121	1995.73	528.4	69.78	1768.52	-1801.28	1455.22	1407.15	2669.08	2398.99	1886.95	2708.24	16207.78
2024	543.26	432.6	99.58	471.28	-358.05	1003.57	-405.96	3397.22	-667.24	169.26	92.2	970.1	5747.82
2023	-509.48	1459.98	1575.87	1209.71	-549.48	2364.59	1393.38	295.34	-699.21	-935.56	2153.79	-945.38	6813.55

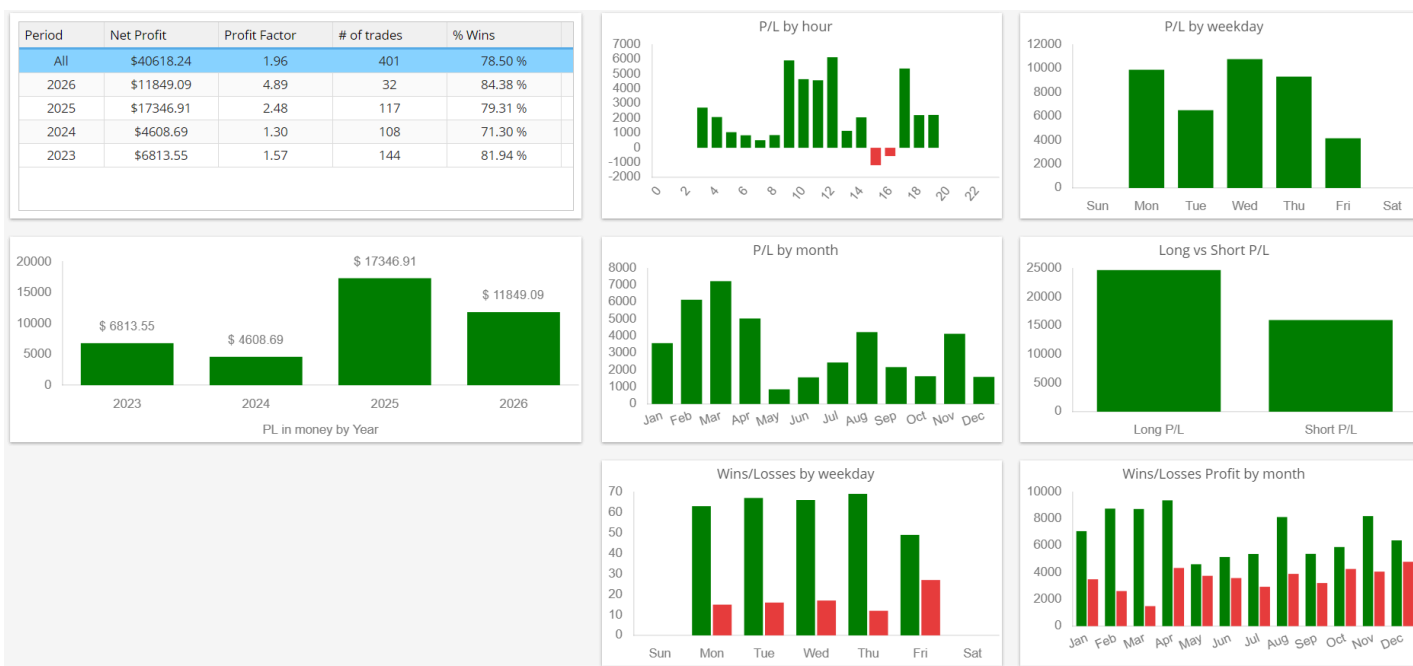
## Equity Chart

The following chart demonstrates the equity growth over time, highlighting the strategy's performance during the backtesting period.



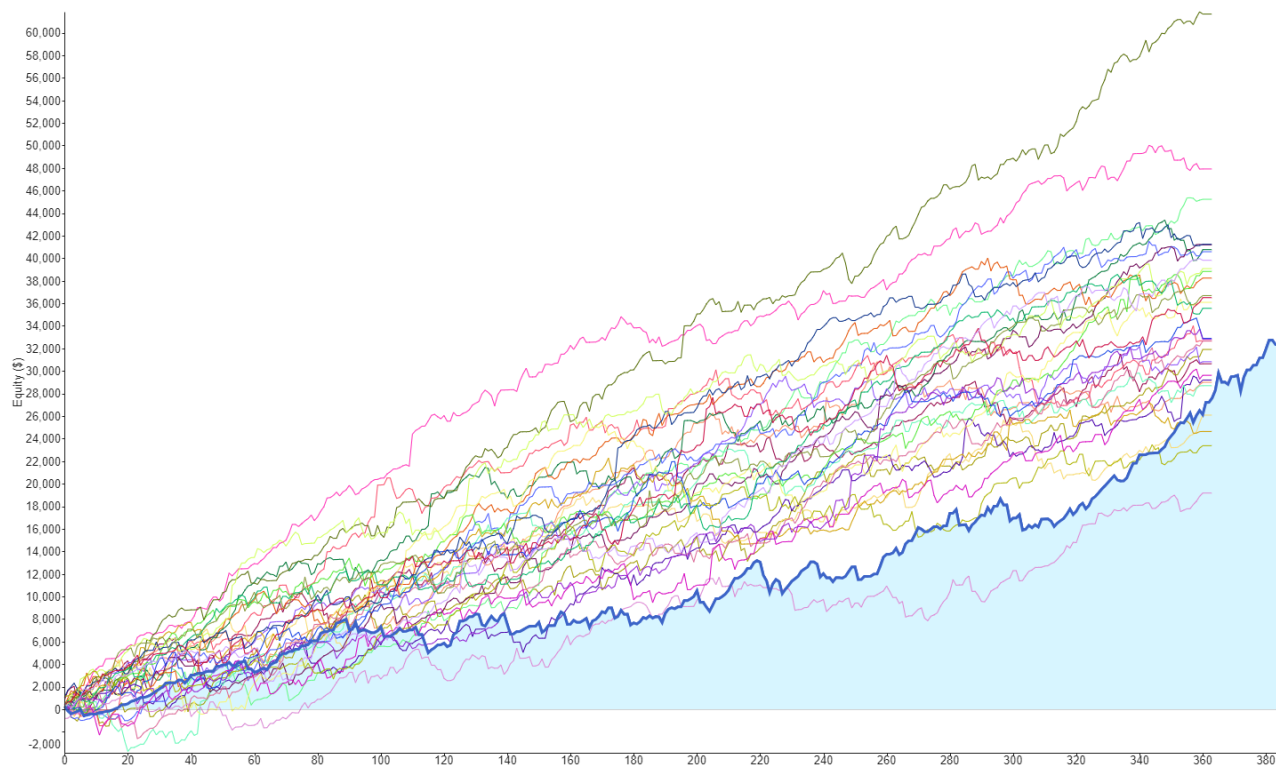
## Comprehensive Trade Analysis

This section summarizes key performance metrics such as win rate, profit factor, etc ensuring the strategy's effectiveness.



## Monte Carlo Simulation

To ensure the robustness and reliability of this trading strategy, a Monte Carlo simulation was conducted. This method involves running numerous randomized simulations to account for variability in market conditions, trade sequences, and potential slippage. The simulation confirms consistent profitability across randomized scenarios, reinforcing the strategy's resilience.



## Detailed Strategy Operation

The Guardian Adaptive PRO GBPUSD EA is an advanced, rule-based trading system designed specifically for the GBP/USD currency pair, operating primarily on the M5 timeframe while also using higher timeframe confirmation from M15 and H1 charts to help identify stronger market conditions. Rather than relying solely on fixed take profits or trailing stops, the strategy uses a combination of adaptive technical indicators — including Keltner Channels, Bollinger Band analysis, Vortex, trend strength and momentum filters — to dynamically manage trades according to current market behaviour. The software continuously evaluates volatility, trend direction and market momentum to determine when trades should be opened and, more importantly, when profits should be protected or positions exited early. Large safety-net stop losses and profit targets remain in place for protection, however most trades are closed intelligently through the EA's adaptive exit logic, helping to reduce time spent in the market, improve trade responsiveness and create smoother overall portfolio performance.

### . Overall Result - PASS\*

This report confirms that this strategy has passed the rigorous validation process and meets the high standards set by Guardian FX Engine Pro.

#### DISCLAIMER

*\* Past results or testing are no guarantee of future performance.*